



# Wimbledon Park Residents' Association

[wimbledonpark.com](http://wimbledonpark.com)

**Spring  
2026**



# sps timber windows



■ "A" rated double-glazed box sash & casement windows ■ French doors ■ plantation shutters



- Award-winning **sps timber windows** is celebrating its 28th year as South West London's most established specialist in the design, manufacture, installation and finishing of premium quality, energy-efficient, bespoke timber windows and doors, including
- Box sash windows, casement windows, front doors, French doors, folding sliding doors.
- Custom made to "A" rated double glazed specifications in Accoya® wood.
- Accurate representation of period designs and features.
- Contact us for a quotation.
- **Wimbledon Park Residents' Association Spring 2026 Offer:**  
Receive up to £150 John Lewis Vouchers (T&C's apply).  
Quote offer code WPRA.

**Showroom** 61 Revelstoke Road, Wimbledon Park, SW18 5NL  
[www.spstimmerwindows.co.uk](http://www.spstimmerwindows.co.uk)  
[info@spstimmerwindows.co.uk](mailto:info@spstimmerwindows.co.uk)  
020 8879 3443 or scan our QR code



# **Easter edition 2026**

## **Contents**

<b>Chairman's Report</b>	<b>4 &amp; 5</b>
<b>Paul Kohler, MP</b>	<b>6 &amp; 7</b>
<b>Friends of Wimbledon Park</b>	<b>8 &amp; 10</b>
<b>Councillors' Report</b>	<b>12 &amp; 13</b>
<b>Latest Note from Save Wimbledon Park</b>	<b>11 &amp; 14</b>
<b>Join the WPRA</b>	<b>15</b>
<b>Durnsford Rec</b>	<b>16 &amp; 17</b>
<b>Wimbledon Museum</b>	<b>18 &amp; 20</b>
<b>Cut Waste and Recycle Better</b>	<b>22 &amp; 24</b>
<b>Wimbledon Park Community Trust</b>	<b>25 &amp; 26</b>
<b>Committee List 2025/2026</b>	<b>28</b>
<b>History of Durnsford Rec (Pam Healy)</b>	<b>29 &amp; 31</b>
<b>Index of Advertisers</b>	<b>30</b>

**Advertising in this magazine.  
Contact Iain Simpson at  
[iainsimpson@imi-coinsulting.com](mailto:iainsimpson@imi-coinsulting.com)**

**VOLUNTEERS NEEDED TO DELIVER NEWSLETTERS IN**

**Durnsford Road, Durnsford Avenue and Kenilworth Avenue.**

**If you would like to help, please contact**

**Iain Simpson at [iainsimpson@imi-consulting.com](mailto:iainsimpson@imi-consulting.com)**

**Wimbledon Park Residents' Association is a Company Limited by Guarantee, Registered in England and Wales, Company No. 16005278. Registered Office: 170 Arthur Road, Wimbledon Park, SW19 8AQ.**

## Chairman's Report

### Pam Healy

Sadly, we are saying goodbye to Pam Healy who is returning to her native Yorkshire after 30 years in Wimbledon Park. Pam has been a fantastic committee member of the WPRA for twelve years. After joining she quickly became immersed in a wide range of issues affecting local residents, particularly those living around the area of Durnsford Rec.

Over the years there have been several major building developments between the Railway and the Rec and the Haslemere Industrial Estate and she has written many letters and attended many planning meetings on behalf of the community.

Pam has taken a special interest in the Rec which is near where she lives and where she walks her dog every day. Over time she has engaged very successfully with Council Officers responsible for the maintenance of the Rec and has managed to bring about great improvements.

She has initiated the planting and nurture of many new trees and flowers, despite the lack of a water supply which she now has encouraged the Council to introduce. She has also pushed the Council successfully for improvements in the children's playground and play equipment.

We have all benefited greatly from her enthusiasm and commitment and we wish her a happy and contented life back in her native Yorkshire.

### Update on AELTC developments

The latest note from Save Wimbledon Park (SWP) is featured on pages 11 and 14. You will see that the Lords Grabiner and Banner, with others, gathered in the Grand Committee Room to promote their cause by attempting to introduce Clause 222C of the English Devolution Bill. This seemed to be a much more refined and extensive attempt than the earlier one.

Baroness Taylor who, at the last meeting, promised a full wide ranging review, had clearly fallen under their spell and changed her mind declaring that the new Amendment clearly provided the necessary solution. As to the promise of wider consultation, she indicated she has been too busy with other legislation. This was disappointing to say the least.

In opposition to the Amendment, both Lord Lucas and Baroness Pinnock emphasized the need for a full consultation.

Finally, Lord Banner decided to withdraw the Amendment but said he would bring it back at the 'Report' stage.

We understand that the Report stage in the House of Lords will be reached on March 24th, March 26th and April 13th.

Just in the last few days, Simon Hogg, Leader of Wandsworth Council, has made a notable statement.

“This proposal by AELTC (All England Lawn Tennis Club) to over commercialise this neighbourhood for a tournament that lasts a few weeks each Summer, at the expense of green space used by local residents every day of the year, is not what our community wants.

“Wandsworth Council has opposed this development from the start. We urge the AELTC to suspend its challenges in the courts and through retrospective changes to national legislation and instead work with local communities to protect the green spaces that make Wimbledon Special.

“Residents rightly expect us to stand up for their parks. People choose to live in neighbourhoods like this because of the access to beautiful open green space. Our job is to protect that - even when the pressure comes from some of the most powerful commercial interests in the country.

“Wimbledon is a world-class tournament that brings pride to London. Protecting the environment and green spaces for the recreation of the communities who live here all year round matters far more.

“Our Council will work with residents and AELTC to help develop plans that enhance the existing site and avoid any building on public open space.”

In 2023, Wandsworth Council’s Planning Committee voted unanimously to reject the proposed development. END

Happy Easter to all, Iain



The stalwarts gather in front of the High Court — Jan 16th 2026

## **A message from our MP Paul Kohler**



### **WIMBLEDON DISTRICT LINE**

**For many, many thousands of my constituents, the Wimbledon branch of the District Line connects us to central London - to work and school, to museums and galleries, to theatre and shows, to nightlife, bars and clubs and to family and friends. When services are reduced or suspended, the impact is immediate and deeply felt across our community.**

**If you use this service, you'll know just how frustrating the past few years have been. From consistent signal failures and shortages of rolling stock to planned engineering works that have overrun and caused knock-on delays, the disruption has almost become an expected feature of using this service. Adding to this, at Wimbledon Station, the annunciators or 'dunciators' as I have taken to calling them, regularly display incorrect information.**

**The chaos was particularly acute this summer, when the tennis championships at the All England Club were underway. During the tournament fortnight, with the eyes of the world on Wimbledon, repeated District Line disruptions led to overcrowding, longer journey times, missed appointments, late arrivals and understandable frustration for both residents and visitors. I raised these concerns directly with Transport for London (TfL), pressing for a full explanation of what went wrong and what contingency planning was in place. While some disruption can be unavoidable in a network of this size and age, the frequency and timing of the issues this summer were unacceptable.**

**Since then, the service has been plagued by ongoing disruption. Two weeks ago, I met with senior representatives from Network Rail, Transport for London (TfL) and South Western Railway (SWR) to get some answers and push for action.**

**And I'm pleased to report we are finally beginning to see some real movement. After years of buck-passing, there is now clear recognition that the Wimbledon branch needs attention and investment.**

**One of the biggest causes of disruption has been the ageing signalling system between Wimbledon and East Putney. In simple terms, it's several generations out of date. I've now secured confirmation that Network Rail has funding in place to modernise this equipment. Work will take place over the next few months, with thorough testing, and is expected to be completed by early summer.**

**These upgrades should improve reliability, help engineers identify and fix faults more quickly, reduce knock-on delays, and improve overall 'readiness and responsiveness'. Many have asked why this part of the line seems more unreliable than others. One reason is that most of the District Line already uses automatic train management technology, but the Wimbledon and Richmond branches do not. The current signalling simply doesn't allow for it, which can mean slower speeds and greater disruption when issues arise.**

**A full signalling overhaul was previously dropped during Covid due to its enormous cost, running into hundreds of millions of pounds, and the technical complexity caused by National Rail and TfL services sharing the same portion of track. This is not going to be addressed anytime soon, although I'll continue to press the government to look seriously at the long-term future of our branch. However, I've been assured this summer's improvements should make a very real difference in the meantime.**

**I'm also pleased to report that upgraded live train information screens are due to be installed from mid-June, giving passengers clearer and more up-to-date details about departing trains. In the meantime, I've pressed SWR, which manages the station, to make better use of tannoy announcements across platforms 1 to 4.**

**This progress has only happened because residents kept speaking up. Your emails, messages and conversations with me have strengthened my hand in holding these organisations to account.**

**So please do continue to get in touch when things aren't working as they should. Real-life examples make it much harder for decision-makers to dismiss the problems. I'll keep pushing Network Rail, TfL and SWR to deliver the reliable service our community deserves, and I'll keep you updated every step of the way.**

## **FRIENDS OF WIMBLEDON PARK NEWS SPRING 2026**

**Padel in the Park – We reported last year about an application to build Padel courts inside the athletics track and explained why we were objecting to the plan. We are disappointed that our objections were not accepted, because we really hoped that Merton would consult and confirm a plan to coordinate the long-term future of the park.**

**We are very aware that our Park remains on the Historic England ‘at risk’ register. The way forward is for the three owners (AELTC, TWC, and LBM) to work together with input from the Community to rectify this problem. This is the long-awaited ‘Landscape Management and Maintenance Plan’, and it is very clear that without it, piecemeal, scattergun interventions around the Wimbledon Park will continue. See our Annual Report <https://www.friendsofwimbledonpark.org/>**

**This year, FOWP volunteers have planted and mulched 60 trees and 1,000 daffodils around the park.**

**LBM have joined us with plans to repair and restore the much-loved Waterfall Garden near the lake and the café, which has been closed off for several years now. We are expecting good news soon.**

**We’ve been discussing the Revelstoke Road entrance improvements, and AELTC’s plan to improve toilet provision in the car park during Wimbledon Fortnight. It’s also great to hear that graffiti is being removed from the Revelstoke Road railway bridge.**

**On Saturday 18<sup>th</sup> April, groups and communities across the UK will be taking part in a UK-wide Day of Action for Nature, Parks and Green Spaces. The purpose is simple: to demonstrate, visibly and collectively, that people everywhere care deeply about the natural world and want to see it protected and restored. FOWP are taking part with the theme ‘Capability Brown and Wimbledon Park: A History Lesson’. Please look out for more details soon.**

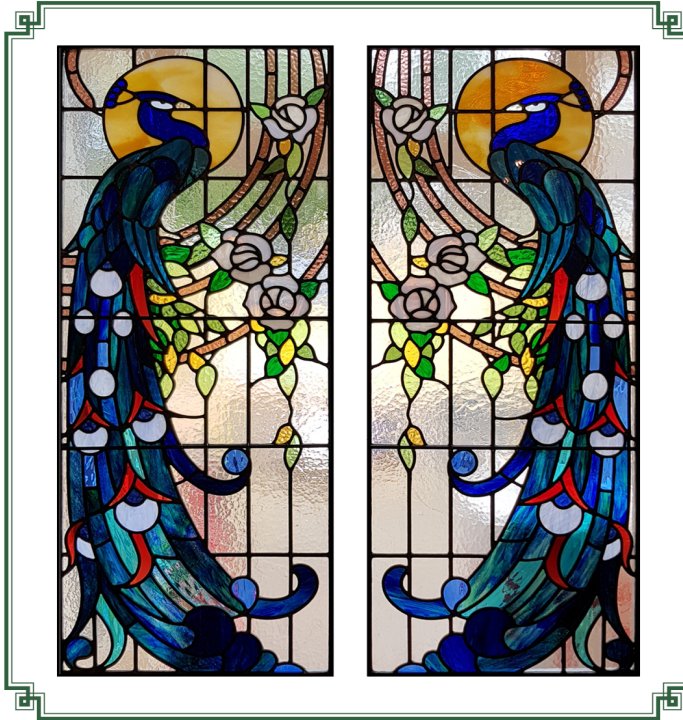
**We’ve planned bat walks on 26 April at 8.15 pm and 26 September at 6.50 pm. This is a fantastic opportunity to learn how modern electronic kit can detect bat calls, and to see Common and Soprano Pipistrelles, as well as (we hope) other species.**

**We will also organise morning walks to watch and listen to birds on the following dates: 12 April, 3 May and 14 June, all starting at 8.30 am at Home Park Road entrance.**

**A wonderful opportunity to see the great variety of Trees in the Park with Dave Dawson will be on Sunday 26 April at 2.00 pm, meeting again at Home Park Road entrance. This is a special time of year when trees have fresh leaves and flowers.**

**Continued on page 10**

VICTORIAN, EDWARDIAN AND CUSTOM STAINED-GLASS



# CORIANDER

TRADITIONAL STAINED GLASS AND LEADED LIGHTS



YOUR LOCAL STUDIO:

**27-29 Kingston Road  
Wimbledon  
SW19 1JX**

020 8947 7635 • [info@corianderstainedglass.co.uk](mailto:info@corianderstainedglass.co.uk)

FOWP warmly welcomes you to join us as we work to conserve and enhance the park. Please visit our informative website, <https://www.friendsofwimbledonpark.org/join-us> to become a member.

**Friends of Wimbledon Park volunteers planting 60 trees at Horse Close Wood  
February 2026**



**The following note was issued by Save Wimbledon Park  
on the 6th March, 2026**

**House of Lords**

**Debate on Clause 222C of the English Devolution Bill, House of  
Lords, March 5<sup>th</sup>**

**All quotes from Hansard**

You will recall that back in November 2025 Lord Gus O'Donnell (director of the All England Lawn Tennis Club, AELTC) together with his chums Lord Banner, Lord Grabiner and Lord Pannick attempted to insert a clause into the Planning and Infrastructure Bill which would have neutralised the legal case mounted by Save Wimbledon Park (SWP) to oppose AELTC's plans to build on Wimbledon Park. The clause was Not Put in the face of considerable cross-party opposition. At the time Government minister Baroness Taylor of Stevenage told the House the amendment *"will not resolve this issue effectively"* and would *"create a contradiction to the procedures in the Local Government Act 1972"* while *"operating retrospectively, which could have unintended consequences."*

She promised *"full consultation"* before reconsidering any law change – consultation that never took place before the amendment returned. The minister announced a *"wider review of existing protections"* for public recreational space to *"bring coherence to the legal framework, making protections more transparent and accessible, so communities can protect their most valued open spaces."* She committed to *"working at pace to find a solution that works for developers and councils while also safeguarding the local spaces that are most valued by communities"* and promised to *"seek to resolve this issue in future legislation."*

On March 5<sup>th</sup> Lords Banner and Grabiner returned to the fray, although Lord O'Donnell decided to sit this one out. This time it was the English Devolution Bill to which they attempted to introduce Clause 222C. It received a very different response from Baroness Taylor: *"We need a mechanism to close this lacuna in the law, while ensuring balanced decisions can be made in the public interest. In my view, Amendment 222C does just that."* And what about the promised commitment to 'full consultation'? Clearly not a priority *"I will write to noble Lords who have taken part in these debates and inform them of how and when we are going to carry out that review and the likely timescales. I have been a bit busy with other legislation, I am afraid, so I have not got round to that yet."*

Continued on page 14

## **Report from your local Councillors**

### **Farewell to Samantha**

It hardly seems possible that nearly four years have passed since we were elected as your local councillors. Local elections take place on Thursday 7<sup>th</sup> May (put the date in your diaries).

We are sorry to say goodbye and very grateful thanks to Samantha MacArthur who will be standing down as one of your councillors here in Wimbledon Park. Samantha has done too many good things to mention here but three areas that stand out are her championing of sport for all, children's health and well-being and great support for allotment holders. However, it is good news for residents in Wimbledon Town and Dundonald ward as Samantha is standing there to continue her public service.

### **Trees**

Yet again the issue of street trees forms a large part of the emails we receive from across the ward. Trees are being left untrimmed, tree pits are being left empty and in some cases form health and safety issues, new trees are being planted in the height of summer (meaning they may struggle to thrive) and overgrown trees are causing problems for house foundations. We have (again) asked for a schedule of tree maintenance and for better management of street trees.

### **Potholes**

It is disappointing to learn that Merton Council is one of the top London Boroughs for potholes and badly maintained roads. Should the Liberal Democrats take control of the Council in May, we will look at this issue and resolve to do better.

### **Padel Courts in Wimbledon Park**

The padel court proposal has been given the go ahead for development this year. There are seven courts planned and work on them will start soon.

### **Food bins on Arthur Road**

There have been a few teething problems with the trial food bins. Most of the issues are caused by them not being emptied often enough. Another issue is people using them for general waste. We are interested to hear your views (especially if you live in a flat above the shops on Arthur Road) – do they work for you?

### **Bridge over the River Wandle at Ravensbury Terrace**

We believe that a bridge (situated next to 10 Ravensbury Terrace leading to Groton Road, Wandsworth) would be of great benefit to residents in this area of the ward. It would make the journey to Garratt Lane and Earlsfield station much quicker and would relieve the narrow pavements on Penwith Road (especially at rush hours). Do you agree with us? Should we start a petition, and could you help collect signatures if we did?

## **Leopold Road roadworks**

**Businesses on Leopold Road have been advised of pending roadworks since last September. The scheduled date has been rearranged ten times. This is not the fault of the Council, but energy suppliers who keep cancelling the works. Now re-scheduled for mid-March, so by the time you read this they may be underway or completed. We hope so.**

## **Events in Wimbledon Park this year**

**We continue to hold Merton accountable for controlling noise, litter and anti-social activities associated with Events in Wimbledon Park.**

### **Key dates in 2026:**

**Magic of Thailand – 9 &10 May**

**Wellnergy – 12 &13 June**

**Tamil Students Fest -18 July**

**Flow State Fitness Festival - 1 August**

**Champagne Festival - 5 September**

**Taste of the Caribbean - 12 September**

**Merton's Fireworks – 5 November**

## **AELTC Queue update**

**One event not listed is the AELTC queue! This caused significant problems, yet again, last year. Jil and Tony have held several meetings with AELTC, FoWP, representatives of local residents' associations (including our own Iain Simpson) and Fleur Anderson MP and Paul Kohler MP. We are assured that enforcement will be improved and that there will be more working toilets. Merton earns a lot of money from renting out our local park. Many residents (and businesses) enjoy having these gatherings, but we are keen to minimise damage and disruption to locals.**

## **Glyphosate use**

**We have been quizzing the Council about its use of glyphosate on weeds on our streets and in our parks. We have asked the relevant departments to look at alternatives.**

## **Car thefts in the ward**

**The police tell us that recent car thefts have been opportunistic rather than planned. Do ensure you keep your car doors locked with no valuables inside.**

**Jil, Sam and Tony**

**Jil.hall@merton.gov.uk, Samantha.macarthur@merton.gov.uk,**

**Tony.reiss@merton.gov.uk**

**Lord Lucas (Conservative) was having none of this: “At the heart of the amendment lies the travails of the All England Lawn Tennis Club. I declare an interest as someone who holds a very low opinion of that organisation, which seems to be entirely concerned with itself and its money and very unconcerned with the communities that it interacts with. That is a widely shared opinion, as noble Lords will know- although they may not agree with it.**

**“In this particular case, the AELTC has behaved abysmally, and it should not be advantaged by shortcutting what should be a careful review. I would like to see it soon and done with speed, but it should be an open public review, involving national bodies and others that are interested in the protection of public trusts and recreation rights to arrive at a coherent, well-agreed solution to this problem. To do it by way of an amendment in a Bill is far too limited. I urge the Minister to stick to her previous resolution.”**

**Baroness Pinnock (Lib Dem) was similarly unimpressed “In summary, Amendment 222C is a four-page amendment that proposes to grant the Secretary of State unprecedented power to permanently discharge statutory trusts from land once held for the public’s enjoyment. It is being framed as a measure to resolve legal technicalities - we have heard that argument from the noble Lords, Lord Banner and Lord Grabiner. In truth, it seems to me that the amendment would be an assault on some of our nation’s parks, sports grounds and green open spaces, which were created for the benefit of the local community.”**

**Lord Lucas added “The provision for consultation in the amendment is exceptionally thin and ill-defined. There is nothing here that I would recognise as getting in among the community and finding out what they care about and want. There is no provision for that kind of depth of research, particularly in the context of the issue we are talking about in Wimbledon, where the interests of those who actually live there seem to be ignored entirely. If this is an amendment which is to be proceeded with on Report, we will have a large number of amendments to it and a long debate.”**

**Lord Banner (Con) finished with: “This amendment is not just about Wimbledon. While welcoming the Minister’s support in principle for the amendment, given that there is a degree of contention, I withdraw it now but will bring it back on Report.”**

**So the threat remains and now it appears that the government has changed its position and is now supporting AELTC’s misleading the House of Lords. We await information as to when the Report stage of the English Devolution Bill will commence.**

## **Calling all residents – Wimbledon Park needs you!**

**Wimbledon Park is a great place to live and work and the Wimbledon Park Residents' Association aims to keep it that way!**

**The Residents' Association works for the good of the community. For example:**

- **we support the Friends of Wimbledon Park planting and improvements in Wimbledon Park;**
- **we act as the Friends of Durnsford Recreation Ground and work with the Council to protect and improve this valuable green space;**
- **we work with the local police to help tackle crime;**
- **we monitor local planning applications and offer positive input (or constructive criticism if necessary);**
- **we support local families and individuals faced with tragedy.**

**It's important to have a sense of pride and belonging in your local community and that's exactly what membership provides. Members receive updates on important local issues, notice of forthcoming neighbourhood events, and the WPRA Newsletter three times a year.**

**Wimbledon Park is growing and improving all the time and the Residents' Association is more active than ever but we can't function without funding.**

**It would be wonderful if you could support the Residents' Association by becoming a member today.**

**Membership costs just £10 per year** and joining is easy. Go to **wimbledonpark.com**, click the 'Join Us' button and follow the steps to create your WPRA membership account. You'll be transferred to the GoCardless platform to set up an annual £10 Direct Debit membership payment. And if you are unsure of your membership status, please email [wpra.members@gmail.com](mailto:wpra.members@gmail.com) and we will check for you.

## DURNSFORD RECREATION GROUND

With the first 2 months of the year being extremely wet, the main field and the copse, like many other parks, have been rather muddy. Hopefully, now spring has arrived, the area will start to dry out. However, the wet weather has been rather good for the fruit hedge with the plum trees putting on a wonderful display of flowers. Hopefully there should be a good crop of plums later in the year.



The spring bulb bed is also putting on a good show and by Easter the tulips will be in full bloom.



For the past 12 years I have been looking after the Rec; keeping the beds tidy, planting shrubs and bulbs and maintaining the fruit hedge, liaising with the Council and idverde when necessary. I have also acquired, through grants, the outdoor exercise equipment, 2 benches, a new fence between the Rec and the Wellington Works, including new shrubs and trees.

I have thoroughly enjoyed looking after the Rec and being a committee member of the Residents' Association, where I have acted as secretary, reviewed and commented on planning applications, liaised with advertisers of this newsletter and monitored air pollution in the Ward, among other things. But now, after 33 years of living in Wimbledon Park, I am returning to my native Yorkshire.

I wish everyone in Wimbledon Park all the best for the future and please look after the Rec. If you would like to help, please contact Iain Simpson.

Pamela Healy



## DONHEAD PREPARATORY SCHOOL

A Coeducational Independent School welcoming 3-11 year old pupils



DISCOVER DONHEAD  
A SLICE OF THE COUNTRY IN SW19



## The Wimbledon Museum

This spring is the perfect moment to (re)discover the Wimbledon Museum, a small museum with a remarkably large reach at the heart of our community. When the museum reopened in November 2022 following a major refurbishment, Wimbledon Society set clear targets: 2,000 visitors in the first year and 3,000 thereafter. The museum not only met those goals but exceeded them. Visitor numbers tell only part of the story, as the museum's reach extends far beyond its weekend opening hours. Researchers consult the archive during the week, while outreach programmes bring history into local libraries, the Merton



**Memory Hub and SEN schools: students at Cricket Green School and Perseid School have produced imaginative animations and some have even composed and performed a song about their favourite museum objects. This year these workshops will be extended to Linden Lodge School for visually impaired and multi-disabled students.**

**Continued on page 20**

# McGLENNONS Solicitors

*Providing legal services in Wimbledon Park since 1995. We specialise in:*

Wills & Lasting Powers of Attorney

Probate & Estate Administration

Residential Conveyancing

Leasehold Extensions & Freehold Enfranchisement

*No charge – 20 minute initial consultation*



**Conveyancing  
Quality**



**William Essex – Principal**

**157 Arthur Road London SW19 8AD**

**Tel: 020 8946 6015**

**www.mcglennons.co.uk**

## **ABK**

### **A.B.K. ACCOUNTANCY & TAX SERVICES**

**For All Your Accountancy, Taxation and Business needs**

- **Accounts**
- **Taxation**
- **Self-employed**
- **VAT Returns**
- **Lettings Accounts**
- **Wages -PAYE**
- **Partnership Accounts**
- **Tax advice**

- **Book Keeping Services**
- **Management Accounts**
- **Self- Assessment Tax Returns**
- **Limited Company Accounts**
- **Company Formation**
- **Sub-contractors C.I.S.**
- **Tax Refunds**

**All services at competitive rates**

**59 Ashen Grove, Wimbledon Park, London SW19 8BL**

**Tel: 020 8947 9931 – Fax: 020 8879 3412 – Mob: 07989770847**

**Email: [abk.accountancy@btinternet.com](mailto:abk.accountancy@btinternet.com) Website – [www.abk-accountancy.com](http://www.abk-accountancy.com)**

Primary school workshops on the Romans, Wimbledon past and present, and Wimbledon during the Second World War continue to expand, and this year the museum is welcoming its first secondary school groups. A collaboration with Kingston University's illustration and animation students has generated family activities and trails alongside a series of animations.

The museum, which is entirely run by volunteers, serves as a platform for talent, both emerging and established. Volunteers, several of whom are aspiring museum and heritage professionals, gain valuable experience that often leads to paid roles in the sector. Local artists are supported through residencies and exhibitions, and an ongoing partnership with Young Wimbledon Artist (YWA), will see artists aged 18 to 25 competing for a month-long residency culminating in a show during this autumn's Wimbledon Arts Trail.

At the heart of all this activity is museum director Jacqueline Laurence's belief in the power of people. As she puts it, "*What makes this museum thrive is the extraordinary group of volunteers who bring such skill, generosity, and joy to everything we do. None of our achievements would be possible without them.*"

Wimbledon Museum is located at 22 Ridgway (on the corner of Lingfield Road, Wimbledon Village, London SW19 4QN and is open to the public every Friday, Saturday and Sunday from 2.30 pm to 5 pm with free entry.

Jacqueline Laurence

Wimbledon Museum

22 Ridgway, SW19 4QN

# NAISMITH ENGINEERING



Serving Wimbledon Park for the past forty years

**5%**  
**Discount**  
when you  
mention this  
ad

- Car Repairs & Servicing
- M.O.T. Preparations
- Complete Engine Overhaul
- Vehicle Collection & Delivery Available

**020 8947 1808**

**NAISMITH**

**ENGINEERING LTD**

176 Arthur Road

Wimbledon Park SW19 8AQ

020 8947 1808 020 8947 3352

**YOUR LOCAL**

**GARAGE**

## Cut Waste and Recycle Better with Recycle More Southfields

Recycle More Southfields was established in 2021 to help local residents recycle hard-to-recycle waste such as plastic toothbrushes, plastic stationery and make-up packaging— the things your Council doesn't collect.

Although the initiative started in Southfields, it covers surrounding areas too, including the Wimbledon Park sides of The Grid.

We have two collection points at 117 Trentham St and 5 Sutherland Grove. Residents drop off pre-sorted hard-to-recycle items according to our weekly schedule, and we send them to specialist recyclers across the UK via free and paid-for programmes.

Together we've saved over 1,400kg of plastic waste from being sent for incineration.

Our WhatsApp groups are also a space for members to share waste reduction and recycling ideas and give items away.

We quickly realised that recycling alone is not the solution. So here are our top tips on cutting waste and recycling better:

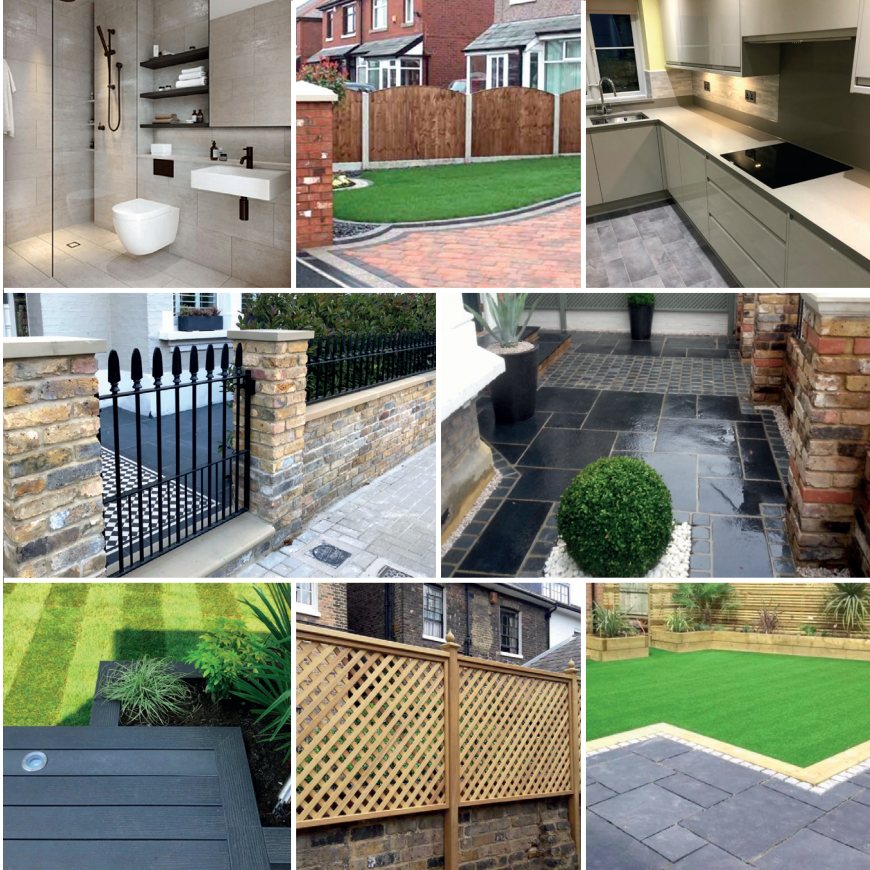
- **Check what your Council accepts.** Council's recycling provision is improving all the time, so it pays to stay up to date via their websites. For example, did you know that you *can* recycle trigger-spray mechanisms and pumps, as long as they are attached to their bottles?
- **Don't "wishcycle".** Putting items your Council doesn't accept into your recycling bin causes problems. Shredded paper clogs machinery so put it in your regular waste bin or compost instead. Clean soft plastics, such as crisps packets, salad bags or yoghurt pot lids can be taken to collection points in local supermarkets, e.g. Arthur Road Co-op.
- **Refill.** You can refill most of your household cleaning products. Local zero waste shops include The Source Putney (SW15 5SU) and BYO in Tooting (SW17 0SN). Online and in the bigger supermarkets, look for Neat Clean, Ocean Saver and Homethings

**Continued on next page**

| ESTABLISHED LOCALLY OVER 30 YEARS |

# K.D. RAYNSFORD

| LANDSCAPE GARDENING AND BUILDING |



Paving and patios, brickwork and garden walls / All types of fencing, trellis and decking

New lawns and artificial grass / Tree pruning and garden tidy ups

Patio cleaning and waste removal / Painting and decorating interior/exterior

Kitchens and bathrooms fitted / Guttering and roofing repairs

Complete renovations to small repairs / All types of building work undertaken

**Call 0800 2 118 618 / Mobile 07946 338 456**

**Free estimates and friendly advice**

- **Borrow.** Instead of buying new items, such as a pressure washer, hedge trimmer or projector, check whether a neighbour has one, or visit the Library of Things at Wandsworth Southside Centre (SW18 4TF) or Morden Library (SM4 5DX).

Inspired? Want to join us?

Email: [recyclemoresouthfields@gmail.com](mailto:recyclemoresouthfields@gmail.com)

Website: [recyclemoresouthfields.org](http://recyclemoresouthfields.org)

Instagram: @Recyclemore\_Southfields



# The Wimbledon Park Community Trust

The Wimbledon Park Community Trust was incorporated in October 2013 and subsequently registered as a charity.

## **The objects of the charity are:**

‘The promotion of the benefits of the inhabitants of Wimbledon Park and the neighbourhood thereof (hereinafter called the area of benefit) without distinction, by the advancement of education and the provision of facilities in the interests of social welfare for recreation and leisure time occupation, with the object of improving the conditions of life for the said inhabitants.’

**The Trust has a lease (99 years from 2013)** from the London Borough of Merton, on the space known as Wimbledon Park Hall including the adjoining Arthur’s Café at 170 Arthur Road. This provides an extremely valuable Community asset for all Wimbledon Park Residents.

**The main income of the Trust is derived from renting the hall and café.**



**Since formation, the Charity has provided nearly £80,000 in grants to local charities and projects. These include:**

St Raphaels Hospice, Shooting Star Childrens Hospice, The Walk and Talk Movement, The Firefighters Charity, London Air Ambulance, Merton Music Foundation, Wimbledon Foodbank, Faith in Action, Wimbledon Museum (of local history), Unique Talent, Table Tennis Tables in Wimbledon Park, Mayor of Merton Charities Fund, Wimbledon Park Residents’ Association and Brooklands Allotments.

Continued on next page

## **Grants**

We would like to encourage local residents to contact us if they feel they can identify a person, organisation or project that would benefit from our support. It can either be a project that would benefit the local area or an organisation that is involved in work that would be of benefit to residents in the local area. We are particularly interested in the idea of supporting an apprentice who lives in the local area.

### **General Guidelines for applying for grants.**

Trustees have total discretion on awarding grants.

All applications must give proper detail of the intended use of the grant money and what the ultimate benefit/outcome will, or is expected to, be.

No grants will be given for general revenue purposes, only for specific or capital spending projects.

### **Can you help?**

The Trust is run by a team of Trustees who are all volunteers and who have been there since the beginning. Succession is now a key issue and it is now the wish of the current Trustees to encourage new Trustees to join the existing board and help and eventually take over the day to day running of the Hall and Café and other related administrative responsibilities. In particular, currently, we are looking for someone to help with Hall bookings and related tasks.

If you have any interest in helping to secure the future of this wonderful local asset and have any background in management, maintenance, Charity work, and like working with people, please get in touch with

Iain Simpson, the Chairman.

Email: [iainsimpson@imi-consulting.com](mailto:iainsimpson@imi-consulting.com). Mobile:07836361782

or 56 Home Park Road, Wimbledon Park, SW19 7HN

(The Accounts of the Trust can be found on the WPRA website,  
[Wimbledonpark.com](http://Wimbledonpark.com))



## DANIEL SMITH

CARPENTER AND SPECIALIST JOINER

Beautiful, bespoke carpentry including:

- Alcove Bookcases • Cupboards
- Wardrobes • Bookshelves
- Sash Windows • Doors
- Home Offices • Radiator Covers

Tel: 020 8874 5205 Mobile: 07950 251026,

E-mail: [daniel-smith1@hotmail.co.uk](mailto:daniel-smith1@hotmail.co.uk)

48 Lavenham Road Southfields London SW18 5HE

## Oakley Locksmiths Ltd

We are a family run business based in Southfields since 1987. Our company offers free no obligation quotations on all types of security for both the residential and commercial markets. Our fully trained locksmiths supply and fit all makes of locks and key cutting in our shop starts from £4.

81 Replingham Road

Southfields, SW18 5LU

020-8871-1238

[www.oakleylocksmiths.co.uk](http://www.oakleylocksmiths.co.uk)

## DOG WALKING WIMBLEDON

Living in Wimbledon Park, I am a reliable and experienced dog walker who walks no more than two dogs at a time in the Wimbledon area.

I also have dogs overnight. DBS checked, insured, reasonable rates.

**Please Contact Charles**  
**[elstub@hotmail.co.uk](mailto:elstub@hotmail.co.uk)**  
**Phone: 07447 457 802**



## WPRA Committee 2025/2026

<b>Christopher Coombe - Planning/Newsletter</b>	<b>Home Park Road</b>
<b>Marianne Linden - Website</b>	<b>Ravensbury Terrace</b>
<b>Pamela Healy - Advertising/Planning/ Newsletter</b>	<b>Brooklands Avenue</b>
<b>Paresh Modasia</b>	<b>Home Park Road</b>
<b>Pauline Mullin - Membership/Website</b>	<b>Wellington Road</b>
<b>Kish Modasia - Facebook</b>	<b>Home Park Road</b>
<b>Iain Simpson, Chairman &amp; Newsletter Editor</b>	<b>Home Park Road</b>
<b>Peter West</b>	<b>Cromwell Road</b>
<b>Cllr Jil Hall, ex officio</b>	<b>Avondale Road</b>
<b>Cllr Samantha MacArthur, ex officio</b>	<b>King's Road</b>
<b>Cllr Tony Reiss, ex officio</b>	<b>Dora Road</b>

## **A repeat (slightly modified) of an article by Pam Healy in 2022 talking about the history of Durnsford Recreation Ground.**

I thought I would do a bit of research into the history behind the Rec and, thanks to a book by Bernard Rondeau, - *Wimbledon Park – From Private Park to Residential Suburb*, I was able to find out quite a few interesting facts which I shared with the Walk and Talk Movement, and I thought I would now share them with you.

The Rec and Wimbledon Park School were part of the Wimbledon Park Estate owned by the Spencer family, which stretched from Tippet's Corner to Wimbledon Village and Wimbledon Common down to the Rec, which would have been farming land at that time.

In 1846 the Wimbledon Park estate was sold to John Beaumont, Managing Director of County Fire Office later to amalgamate with Sun Alliance. His daughter Augusta, later Lady Lane, inherited the estate but her only interest appears to have been financial as she lived in Suffolk and proceeded to sell off parts of the wider estate.

The area that is now Brooklands Avenue, Lucien Road and Dawlish Avenue, and known as Pollard's Field, was sold to the Wise brothers in 1898 and became a sports ground for Morgan Crucible Company until 1920 and then it was a sports ground for the Van den Berghs company until 1934. During the winter months this area was usually flooded and was used for ice-skating; something the residents of Brooklands Avenue and Lucien Road are well aware of, as the area still floods today!

In 1907 Lady Lane sold what are now the Rec and the school to the Council. The school opened in 1908 using a redundant school from Woking, which consisted of external sides and roof made of corrugated iron; it therefore became known as the 'Tin School'. The classrooms were heated by slow combustion coke stoves and in winter temperatures as low as 1°C were not unusual! It was only meant to be temporary but remained for some 20 years. The new school was opened in 1927.

In the Rec, sports were played with Wimbledon Park Rangers Football Club formed in 1907 who played friendly matches against Southern Railway employees and Wimbledon Borough employees. There were also lawn tennis and a bowling club, which moved from The Crescent in 1914.

Continued on page 31

## Index of Advertisers

<b>Accounting</b>	<b>ABK Accountancy and Tax Services</b>	<b>19</b>
<b>Carpenter</b>	<b>Daniel Smith</b>	<b>27</b>
<b>Dogwalker</b>	<b>Charles Elstub</b>	<b>27</b>
<b>Engineering</b>	<b>Naismith Engineering</b>	<b>21</b>
<b>Locksmiths</b>	<b>Oakley Locksmiths Ltd</b>	<b>27</b>
<b>Landscape Gardening and Building</b>	<b>K D Raynsford</b>	<b>23</b>
<b>Restaurant</b>	<b>Chick 'N' Chaii Halal</b>	<b>32</b>
<b>School</b>	<b>Donhead</b>	<b>17</b>
<b>Solicitors</b>	<b>McGlennons</b>	<b>19</b>
<b>Stain Glass &amp; Leaded Lights</b>	<b>Coriander</b>	<b>9</b>
<b>Windows</b>	<b>SPS Timber Windows</b>	<b>2</b>

During WWII there were underground public air raid shelters in the Rec and bombs fell on the Rec on 12 Sept and 4 Oct in 1940 and again on 17 Feb 1941. I am not aware of any casualties.

**Editor's note:**

The last print run of Bernard's book has been exhausted but rumour has it that a new reprint is on the horizon. It is certainly worth a read if you are interested in the history of Wimbledon Park. It contains lots of lovely old photos and maps and information on nearly every street in the Ward, together with information about Wimbledon Park station and the Park.

We will keep you posted when the new edition is available.

+++++



**Wimbledon Park Hall**  
**your community Hall**  
**at 170 Arthur Road, Wimbledon Park**  
**All booking information can be found at**  
**[www.wimbledonpark.com](http://www.wimbledonpark.com)**  
**Email Hire inquiries to: [wimbledonnparkhall@gmail.com](mailto:wimbledonnparkhall@gmail.com)**



# Chick 'N' Chaii

HALAL



**...IT'S ALL ABOUT THE TASTE!**



**ORDER NOW!**

**393 DURNSFORD ROAD**

**LONDON | SW19 8EE**

**TEL: 02089472179**